

BrusselsDiplomatic

DAILY NEWSPAPER FOR EU-AFFAIRS, DIPLOMACY, INTERNATIONAL AFFAIRS AND EXPATS IN BRUSSELS

SEARCH

Search

Home Contact

ABOUT US | PRESSBOOK | EU | EUROPEAN PROJECTS & EVENTS SHOWCASES | INTERNATIONAL | ECONOMY | BELGIUM | ARTS | LIFESTYLE | TRAVEL | PARTNERS
ADVERTISING PRICES | THE READER'S CLUB | WINE

SUBSCRIBE TO RSS



NEWS

The past and the future of the world of trains. #trainworld #belgium #museum

POSTED BY OBFACE | 22 SEPTEMBER 2015 | LEAVE A COMMENT

FILED UNDER BELGIUM, FUTURE, PAST, TRAINWORLD

The opening of a new museum in Brussels soon: Trainworld.



What have been the developments of the train since its invention and what will be its possible future? This Friday, September 25th, 2015, Trainworld will offer to answer questions like those. The station of Schaerbeek in Brussels serves as the perfect location to situate the museum, as the station is of neo-Renaissance style dating back to 1887. Guests and even experts will surely have a pleasant visit as the museum just overflows with

the richness of its industrial past of the Belgian railroad world. The idea of this museum came right out of the passionate and inspired minds of François Schuiten and Alexandre Obolensky – they have already worked on several projects in the past. A space covering 8000m², it will not only hold a museum but there is also a space for conferences and seminars and a restaurant. To complete the ultimate train experience, one can stay the night at a Train Hostel with authentic railway sleeper carriage. A unique experience to be discovered without waiting, for an immediate boarding of an amalgamated reality, dream and imagination.

For those who still want to continue the discovery of the world of trains, they can also visit the exhibition at the gallery Huberty & Breyne at the "Sablon". This exhibition brings together the two worlds of François Schuiten (a cartoonist) and Alexandre Obolensky (a painter). Works of drawings, screenprintings and paintings dedicated to the universe of railroads verify the great attractions of the upcoming museum of the trainworld. It is an exhibition that will awaken the visitor's imagination by the ancestral dreams of nomadism and escape. It is a work of creation which evokes among others the journeys and the speed. In short a complete change of scenery in time and space of the railway world.



Wishing you a nice journey...

For more information: www.trainworld.be

Olivier Bulto

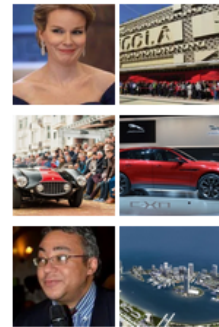


SUBSCRIBE FREE FOR BRUSSELSDIPLOMATIC.COM
abonneren op brusselsstar

Join 5,802 other followers

Schrijf in/Abonnez-vous

MOST READ NEWS



MIDDCOM

MIDDCOM

BRUSSELS STAR